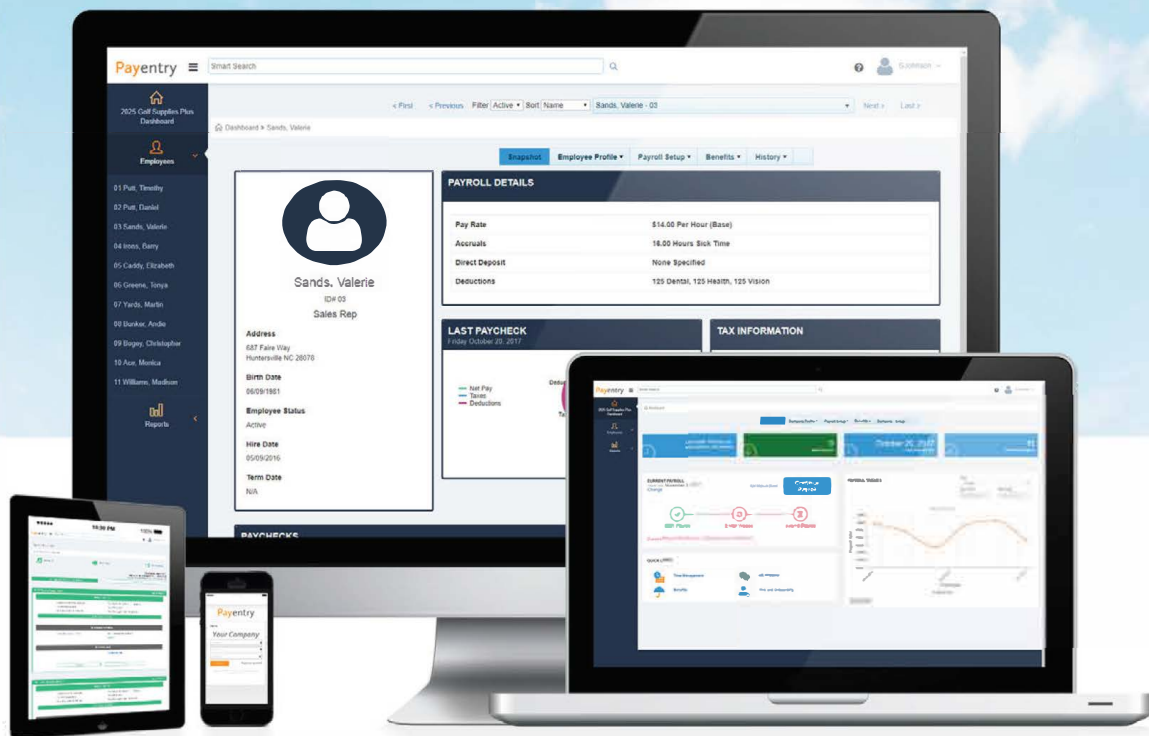




SEE WHAT'S NEW WITH

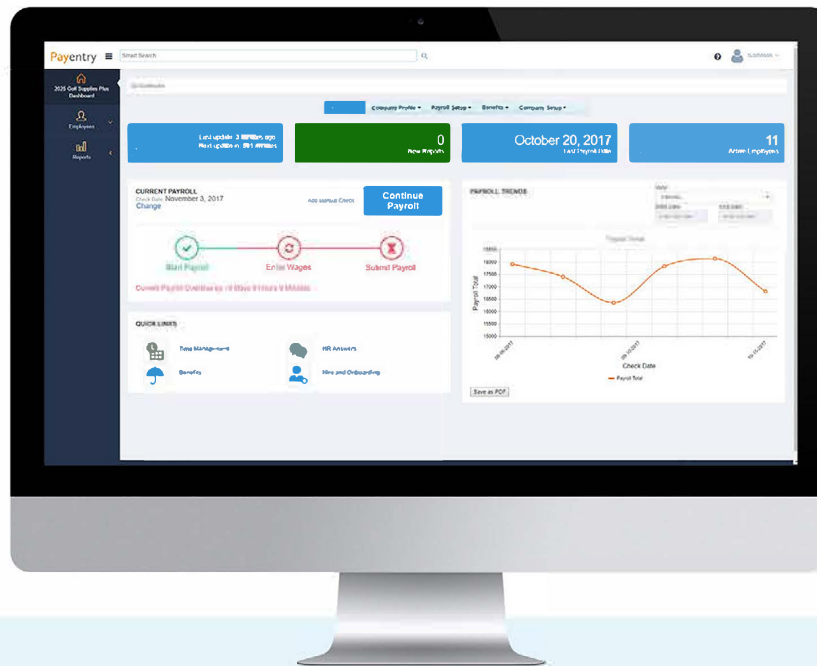
NextGen



An Innovative next step in workforce management
built by our customers, for our customers.

Payentry

OUR NEXT BIG THING IS **Payentry NextGen**



Designed to help employers solve problems across human resources and payroll, NextGen provides a simple solution to the never-ending needs when it comes to managing employees.

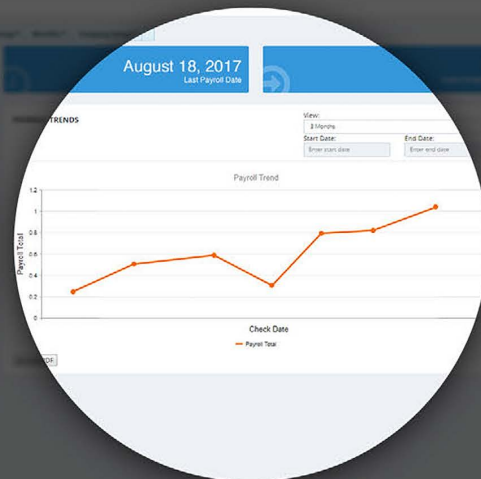
Software challenges that make processing payroll a pain for today's employers —

- 1 Restricted access to the data you need to make decisions**
Finding the information you need fast is difficult when it's buried so deep in the system that it requires a detective to find it.
- 2 Inability to handle complexities unique to each company**
Truly simple solutions to paying employees are hard to come by. In many cases complex situations are compounded by payroll software.
- 3 Outdated, clunky systems**
A lot of things have changed over the last 20 years, but has your workforce management software?



DATA AT YOUR FINGERTIPS

Keep track of payroll trends and quickly drill down to see specific payroll information



When an employee has a question about their paycheck, there's no need to dig around for the details, simply view the graph or click on View Details to see the specific information on the employee's account



Access to detailed reports and report building functionality that connects the user to the data instantaneously



SIMPLE METHODS TO EXECUTING COMPLEX TASKS

Payroll Dashboard

Dashboard > ABC Company > Payroll Batches > Batch W > Enter Wages

Check Date: 1/15/2018

W - Weekly Payroll

| Add/Edit Check | Employee ↓ | ID | Auto |
|--|-------------------|----|--|
| Add Edit | Smith, Michael | 2 | <input checked="" type="checkbox"/> Pa |
| Add Edit | Goldberg, William | 4 | <input checked="" type="checkbox"/> Pa |
| Add Edit | Berube, Brian | 3 | <input checked="" type="checkbox"/> 40.0 |

10 items per page

Batch Grid Settings

Filter: Batch W

Choose Column to display on grid

- ☒ ID
- ☐ Auto Pay
- ☐ Home Dep
- ☒ Base Rate
- ☒ Total Hours
- ☒ Gross Pay
- ☒ Net Pay

1/15/2018 TO 1/13/2018
for this batch: **\$8,300.00**

1 - 3 of 3 items

[Back to Payroll Batches](#)

Configure the column display to fit your preferences

Payentry

Smart Search

Edit Check Details

Smith, Michael(1)

Check 1 of 1

Employee Pay Summary

Employee Id: 2
Dept: 500
Frequency: Weekly
Status: Active
Type: Regular Full Time

| Rate | Amount/Per | Salary |
|------|------------|----------|
| Base | 0.00 | 1,000.00 |

| Accrual | Hours |
|---------|-------|
| Vac | 0.00 |
| Sick | 0.00 |

| Code Type | Code | Description | Hours | Rate | Amount | Delete |
|-----------|------|-------------|-------|------|--------|------------------------|
| Earning | EOT | Overtime | 3.50 | 0.00 | 0.00 | Delete |

1 - 1 of 1 items

[Add](#) EHol - Holiday

[Save](#) [Cancel](#)

15/2017 TO 10/21/2017
for this batch: **\$8,300.00**

1 - 3 of 3 items

[Back to Payroll Batches](#)

Add and edit employees' paychecks easily



NextGen takes Payentry to the next level.

Payentry NextGen offers technology that makes processing payroll simple- the newest processing engine in the US, and the most intuitive workflow and user experience, designed by the customer for the customer.



Improved UI makes payroll even faster.



Visual mapping and detailed reports that allow you to easily track information.

NextGen



New save options make it easier to keep your hard work safe.



Smart search lets you easily find what you need.



Dashboard views display important data all in one place!





NextGen

***For more information visit
www.peopletopayroll.com***